

# PUBLIC ART PROGRAM

## Cherryland Community Center

The Cherryland Community Center public art program is provided through Alameda County's Percent for Art Ordinance managed by the Office of the Alameda County Arts Commission. The goal of the public art program is to provide positive, uplifting art experiences for the community. The artists were chosen in 2014 by a Selection Committee comprised of community members plus representatives from Hayward Area Recreation and Park District (HARD) and the County of Alameda.

The Selection Committee members were: Lane Bailey (Community Development Agency), Jean Clark (HARD), Michael Freed (Community Representative), Cody George (HARD), Minane Jameson (Community Representative and HARD Board Member), Arlene Hood (Community Representative), Ingrid Moller (Community Representative), Jaimie Orfanos (Community Development Agency), and Cindy Torres (Community Representative).



### ***In Full Bloom***

Artist: Debra Stuckgold

Artist Debra Stuckgold created designs that were cut into metal panels that are part of the building's architectural canopies covering the two entrances and the exterior walkways. The designs feature silhouetted images of cherry tree branches and blossoms. The original artwork was created through a handmade process using drawing, painting, and cut paper to create full-size paper collages. The artwork was then photographed, turned into a digital file, and cut into the metal panels. As visitors walk under the canopies, they can enjoy looking up at the cut shapes and also experience the shadows that fall onto the walls and walkways.

Cherryland Community Center  
278 Hampton Road, Hayward, California 94541

## ***Framed Artworks***

Artists: Jeffrey Hantman, Yan Inlow, Karen Kramer, and Fernando Reyes

Four artists were selected to create framed artwork that is permanently installed throughout the public spaces of the Center. The artists each created a small series of 2-4 artworks inspired by Cherryland's community, history, gardens, and the Meek Estate. Below is a selection of the work.



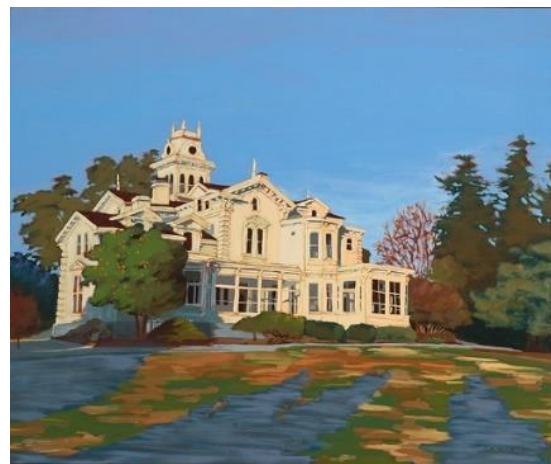
Artist: Yan Inlow  
Title: *Butterflies Enjoying Poppies on a Spring Day #1*  
Materials: Silk embroidery



Artist Jeffrey Hantman  
Title: *B, A, C*  
Materials: Mixed media on wood panel



Artist: Karen Kramer  
Title: *Harvest Bounty*  
Materials: Watercolor on paper



Artist: Fernando Reyes  
Title: *Shadows Crossing Meek Mansion Estate*  
Materials: Oil on wood panel

*The artwork at the Cherryland Community Center is part of the Alameda County Public Art Collection. The artwork was commissioned by the Alameda County Arts Commission on behalf of the Alameda County Board of Supervisors. All artworks copyright the artists. All rights reserved.*

*For more information about the Public Art Program at the Cherryland Community Center, contact the Alameda County Arts Commission at [artscommission@acgov.org](mailto:artscommission@acgov.org). The Office of the Arts Commission is a division of the County's Auditor-Controller Agency/Clerk-Recorder's Office led by elected official Melissa Wilk.*

*[www.acgov.org/auditor](http://www.acgov.org/auditor)      [www.acgov.org/arts](http://www.acgov.org/arts)*